


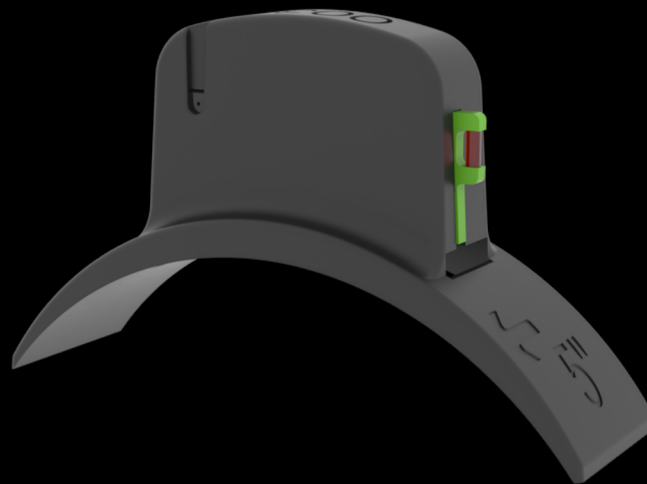
## 5. WARRANTY

The A1210 sensor is guaranteed for 2 years. They are not covered by warranty in case of:

- **Damage due to incorrect installation. Follow the instructions in the “A1210 Instruction Manual” document carefully**
- **Damage caused by incorrect mounting or removal of the tyre from the rim. Please carry out these operations with the utmost care and attention**
- **Damage caused by water infiltration, including that caused by residual water in the rim (for example, from undrained compressors)**

 **Battery autonomy is not covered by the warranty as it depends on the effective use of the sensor**

# ***WARNINGS AND WARRANTY OF THE A1210 SENSOR***



 **ALFANO**

 [www.alfano.com](http://www.alfano.com)

## 1. AUTOMATIC ACTIVATION

The A1210 sensor is automatically activated within one minute of detecting a pressure other than ambient

When the sensor is active, it transmits the detected data every second. If it is not active, it sends data every minute

Once activated, it remains in function as long as it is under pressure

Once exposed to ambient pressure again, the sensor remains active for 15 minutes before switching off

## 2. BUILT-IN BATTERY AND AUTONOMY

For dimensional reasons and to minimise weight, the sensor is equipped with a non-replaceable built-in battery

The autonomy of the built-in battery depends on the frequency of use

**EXAMPLE:** if the sensor is used for 15 hours per week, the estimated battery life is approximately 2 years. On the other hand, if it is used for 5 hours per week, the estimated battery life is approximately 5 years

## 3. PRESERVING BATTERY LIFE

To preserve battery life, it is essential that the sensor is not under pressure when it is not needed

It is not enough to remove the pressure from the tyre, but it is necessary to remove the inner valve component from the rim or the tyre from the rim

**EXAMPLE:** leaving the sensor under pressure for just one week will reduce its battery life by approximately 5 months



## 4. COMPATIBILITY

The A1210 sensor is designed for go-kart rims only and is not compatible with any other vehicles